

# ATS 125 A

Switchboard  
for contactors



WEIGHT:  
**17,5 kg**

DIMENSIONS:  
**L: 600 mm**  
**W: 250 mm**  
**H: 400 mm**

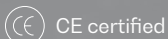
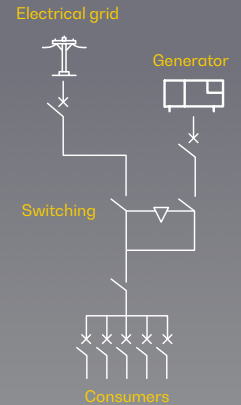
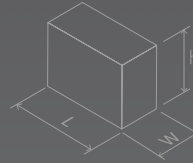


Image for orientation purposes. Dagartech reserves the right to modify the data in this technical sheet without prior notice.



## 1. General technical data

<b>General technical data</b>	<b>Contactor application</b>	Resistive load
	<b>Employment category</b>	AC-1
	<b>Frequency</b>	50/60Hz
	<b>Number of poles</b>	4
	<b>Composition of auxiliary contacts</b>	N/A
<b>Rated operating voltage (<math>U_o</math>)</b>	Supply voltage, state 1 $\leq$ 300 V DC 25...400 Hz Supply voltage, state 1 $\leq$ 690 V AC	
<b>Nominal corr. of employment (<math>I_o</math>)</b>	125 A 60°C) at $\leq$ 440 V CA AC-1 for supply circuit	
	<b>Type of control circuit</b>	AC at 50/60 Hz
	<b>Control circuit voltage (<math>U_c</math>)</b>	230V AC 50/60Hz
	<b>Peak voltage withstand (<math>U_{imp}</math>)</b>	8 kV according to IEC 60947
	<b>Overvoltage category</b>	III
<b>Conventional thermal current at &lt;60°C (<math>I_{th}</math>)</b>	125 A at <60°C for supply circuit N/A	
<b>Irms rated connection power</b>	1100 A at 440 V for supply circuit according to IEC 60947 N/A N/A	
<b>Assigned shearing power</b>	1100 A at 440 V for supply circuit according to IEC 60947	
<b>Allowable time current (<math>I_{cw}</math>)</b>	640 A at <40°C - 10 s for supply circuit	
	990 A at <40°C - 1 s for supply circuit	
	135 A at <40°C - 10 min for supply circuit	
	320 A at <40°C - 1 min for supply circuit	
	N/A N/A N/A	

### Standards

- CSA C22.2 No 14
- EN 60947-4-1
- EN 60947-5-1
- IEC 60947-4-1
- IEC 60947-5-1
- UL 508

### Product certifications

- UL
- BV
- CCC
- LROS (Lloyds Register of Shipping)
- DNV
- CSA
- RINA
- GOST
- GL

50/60 Hz

Remotely operated motorised switch (RTS)

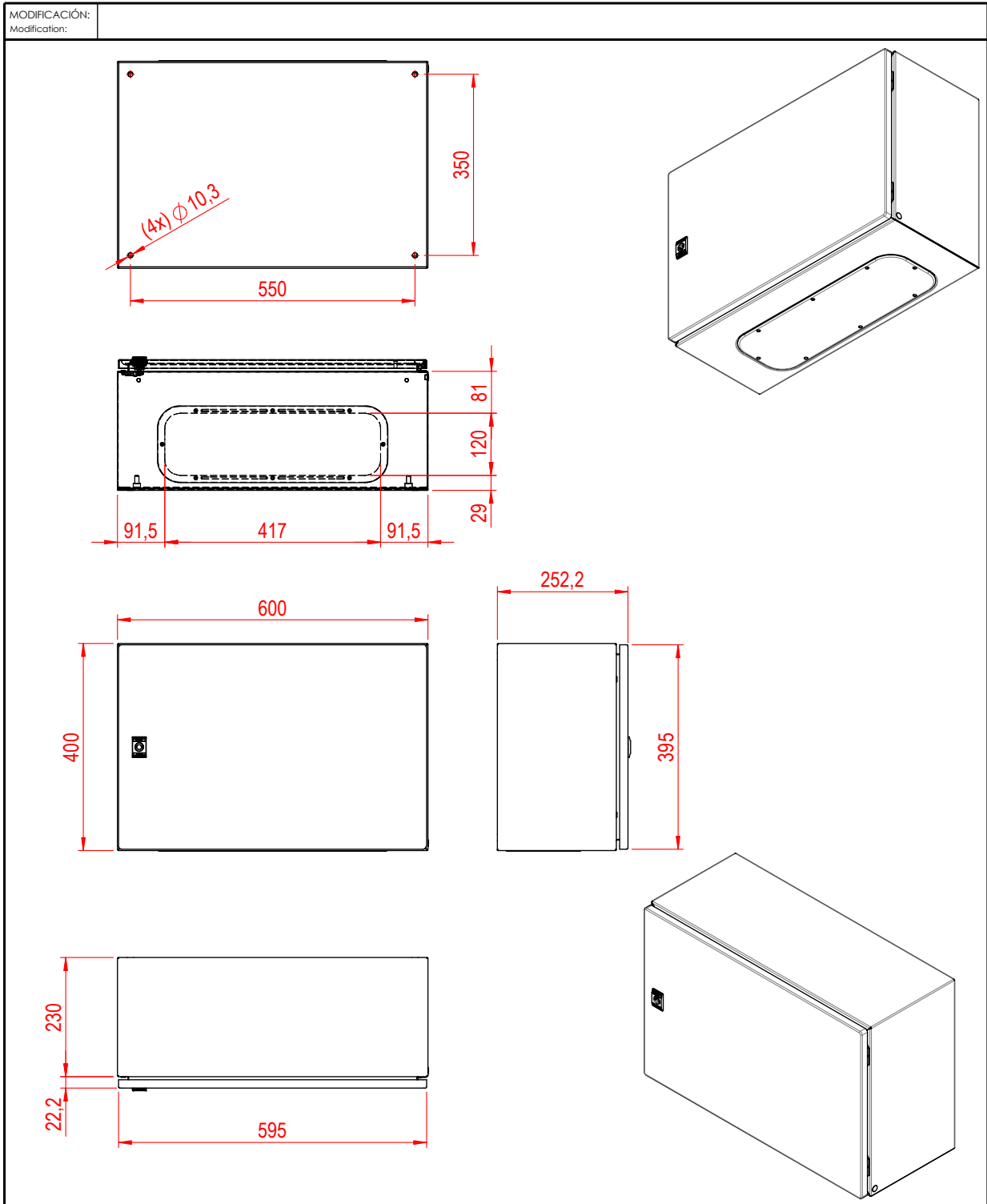
## 2. Electrical specifications

Electrical specifications / Amperage	125A
<b>Associated fuse</b>	200 A gG at <= 690 V type 1 coordination for power supply circuit
	160 A gG at <= 690 V type 2 coordination for power supply circuit
	N/A
<b>Rated insulation voltage (U<sub>i</sub>)</b>	Power supply circuit, status 1 600 V CSA certified
	Power supply circuit, status 1 600 V UL certified
	Power supply circuit, status 1 1000 V according to IEC 60947-4-1
	N/A
	N/A
<b>Average impedance</b>	N/A
	0.8 mOhm - lth 125 A 50 Hz for power supply circuit
<b>Power dissipation per pole</b>	12,5 W AC-1
<b>Switching duration, network-group (ms)</b>	22
<b>Switching duration, group-network (ms)</b>	22
<b>Maintenance consumption in VA</b>	245 VA 60 Hz 0,75 20 °C)
	245 VA 50 Hz 0,75 20 °C)
<b>Consumption on call in VA</b>	26 VA 60 Hz 0,3 20 °C)
	26 VA 50 Hz 0,3 20 °C)
<b>Heat dissipation</b>	6..10 W at 50/60 Hz
<b>Maximum cable cross-sections (mm<sup>2</sup>)</b>	96 mm <sup>2</sup> / 2x50 mm <sup>2</sup>

## 3. Mechanical specifications

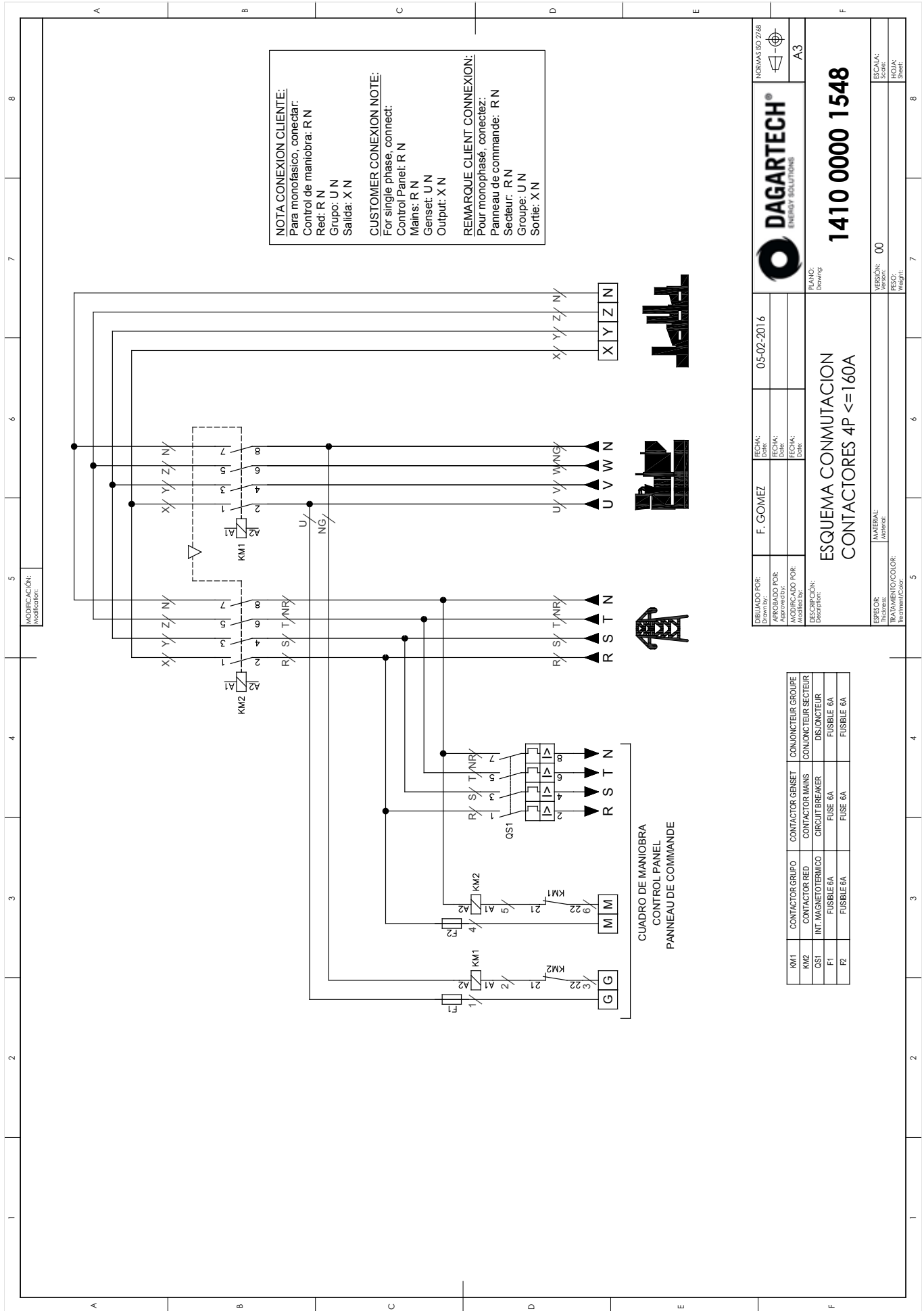
Electrical specifications / Amperage	125A
<b>Mechanical durability (cycles)</b>	4
<b>Mechanical protection index</b>	IP66
<b>Mechanical shock resistance of the enclosure according to IEC 62262</b>	IK10
<b>RAL Colour</b>	RAL 7035

Electrical specifications / Amperage	125A
<b>Mechanical durability (cycles)</b>	4
<b>Mechanical shock resistance of the enclosure according to IEC 62262</b>	IK10



MODIFICACIÓN: Modification:							
DIBUJADO POR: Drawn by:	PLECINA	FECHA: Date:	23/11/2021			NORMAS ISO 2768-c	
APROBADO POR: Approved by:		FECHA: Date:				A4	
MODIFICADO POR: Modified by:		FECHA: Date:					
DESCRIPCIÓN: Description:				PLANO: Drawing:			
<p><b>ARMARIO DE CHAPA 400X600X250 -- NSYCRN46250 (ALTO X ANCHO X PROFUNDO)</b></p>				<p><b>140000005314</b></p>			
ESPEJOR: Thickness:	MATERIAL: VER LISTADO		VERSIÓN: Version:	ESCALA: 1:10		SCALA: 1:10	
TRATAMIENTO/COLOR: Treatment/Color:			PESO: Weight:	10.82		HOJA: Sheet: 1 / 1	

V.O.-2024. Last update: 19/04/2024. Indicative technical plan and indicative images. Dagartech reserves the right to modify the data in this technical sheet without prior notice.



**NOTA CONEXION CLIENTE:**  
 Para monofasico, conectar:  
 Control de maniobra: R N  
 Red: R N  
 Grupo: U N  
 Salida: X N

**CUSTOMER CONEXION NOTE:**  
 For single phase, connect:  
 Control Panel: R N  
 Mains: R N  
 Genset: U N  
 Output: X N

**REMARQUE CLIENT CONNEXION:**  
 Pour monophasé, connectez:  
 Panneau de commande: R N  
 Secteur: R N  
 Groupe: U N  
 Sortie: X N



CUADRO DE MANIOBRA  
 CONTROL PANEL  
 PANNEAU DE COMMANDE

DIBUJADO POR: Drawn by: F. GOMEZ		FECHA: Date: 05-02-2016		NORMAS ISO 2768	
APROBADO POR: Approved by:		FECHA: Date:		A3	
MODIFICADO POR: Modified by:		FECHA: Date:		1410 0000 1548	
DESCRIPCION: Description: ESQUEMA CONMUTACION CONTACTORES 4P <=160A		PLANO: Drawing:		SECCION: Section: 00	
MATERIAL: Material:		TRATAMIENTO/COLOR: Treatment/Color:		FECHA: Date: 8	
PESO: Weight:		FIOJA: Sheet:		8	

RM1	CONTACTOR GRUPO	CONTACTOR GENSET	CONJONCTEUR GROUPE
RM2	CONTACTOR RED	CONTACTOR MAINS	CONJONCTEUR SECTEUR
QS1	INT. MAGNETOTERMICO	CIRCUIT BREAKER	DISJONCTEUR
F1	FUSIBLE 6A	FUSE 6A	FUSIBLE 6A
F2	FUSIBLE 6A	FUSE 6A	FUSIBLE 6A



**DAGARTECH<sup>®</sup>**

CUSTOM ENERGY SOLUTIONS

---

[info@dagartech.com](mailto:info@dagartech.com)

T +34 976 141 655

---

**CUSTOM  
ENERGY  
SOLUTIONS**

[dagartech.com](http://dagartech.com)