

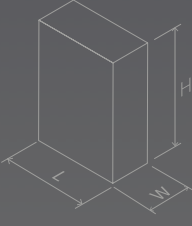


# ATyS d 1000A

Remotely operated motorised switch (RTS)

WEIGHT:  
**160 kg**

DIMENSIONS:  
L: **676 mm**  
W: **775 mm**  
H: **1153 mm**



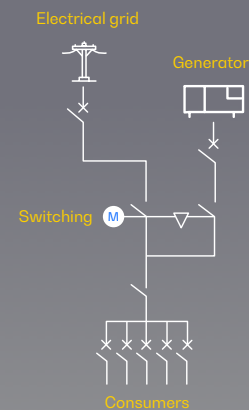




 CE certified

Image for orientation purposes. Dagartech reserves the right to modify the data in this technical sheet without prior notice.


 Supply voltage  
208-277VAC±20%

 Plug&play  
Solution

 Emergency manual  
start

 Watchdog  
relay

 IEC 60947-6-1 AC  
33B (up to 1250A)

## 1. General technical data

<b>General technical data</b>	Rated voltage	230VAC	
	Voltage supply range	177-288VAC	
	Frequency	50Hz / 60Hz	
	Number of poles	4	
	IP protection degree	43	
	Cutting and isolating devices	Mechanically interlocked	
	Cutting sectioning	Total Apparent	
	Operating mode	Automatic / manual operation mode with interlocking	
	Blocking	Lock - padlock	
	Cable connection	Low/low	
	Fastening system	Ground fixing	
Frame colour	RAL 7035		

- ATyS d devices are **4-pole remotely operated motorised transfer switches** with fully apparent cutoff.
- They allow the **on-load transfer of two three-phase power supplies via de-energised remote contacts**, from an external automatic controller, using pulse logic or a switch.
- They are **designed for use in low voltage systems** where an interruption of power to the load during transfer is acceptable.

### Environmental conditions

Humidity (non-condensing)	55 °C	80%
	40 °C	95%
Temperature	No de-rating	-20°C +40°C
	With de-rating	-20°C < t ≤ +70°C
Altitude	No de-rating	Max 2000m
	2000 m<A≤3000	3000m<A≤4000
Correction factors	EU	0,95
	IE	0,85

### Directives and Regulations

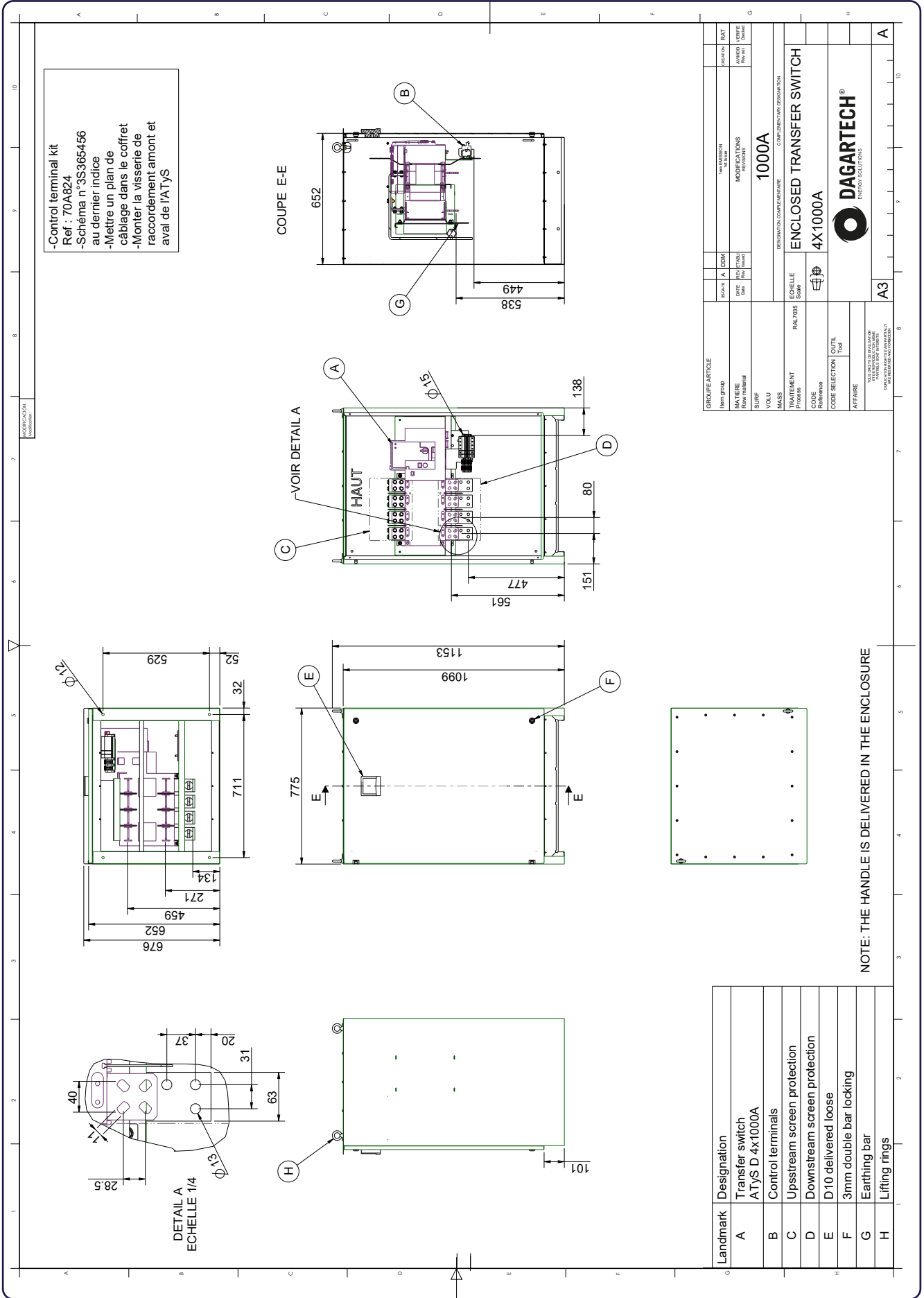
At a minimum, the ATyS d M models comply with the following international standards

- IEC 60947-6-1
- GB 14048-11
- EN 60947-6-1
- VDE 0660-107
- BS EN 60947-6-1
- NBN EN 60947-6-1
- IEC 60947-3
- IS 13947-3
- EN 60947-3
- NBN EN 60947-3
- BS EN 60947-3

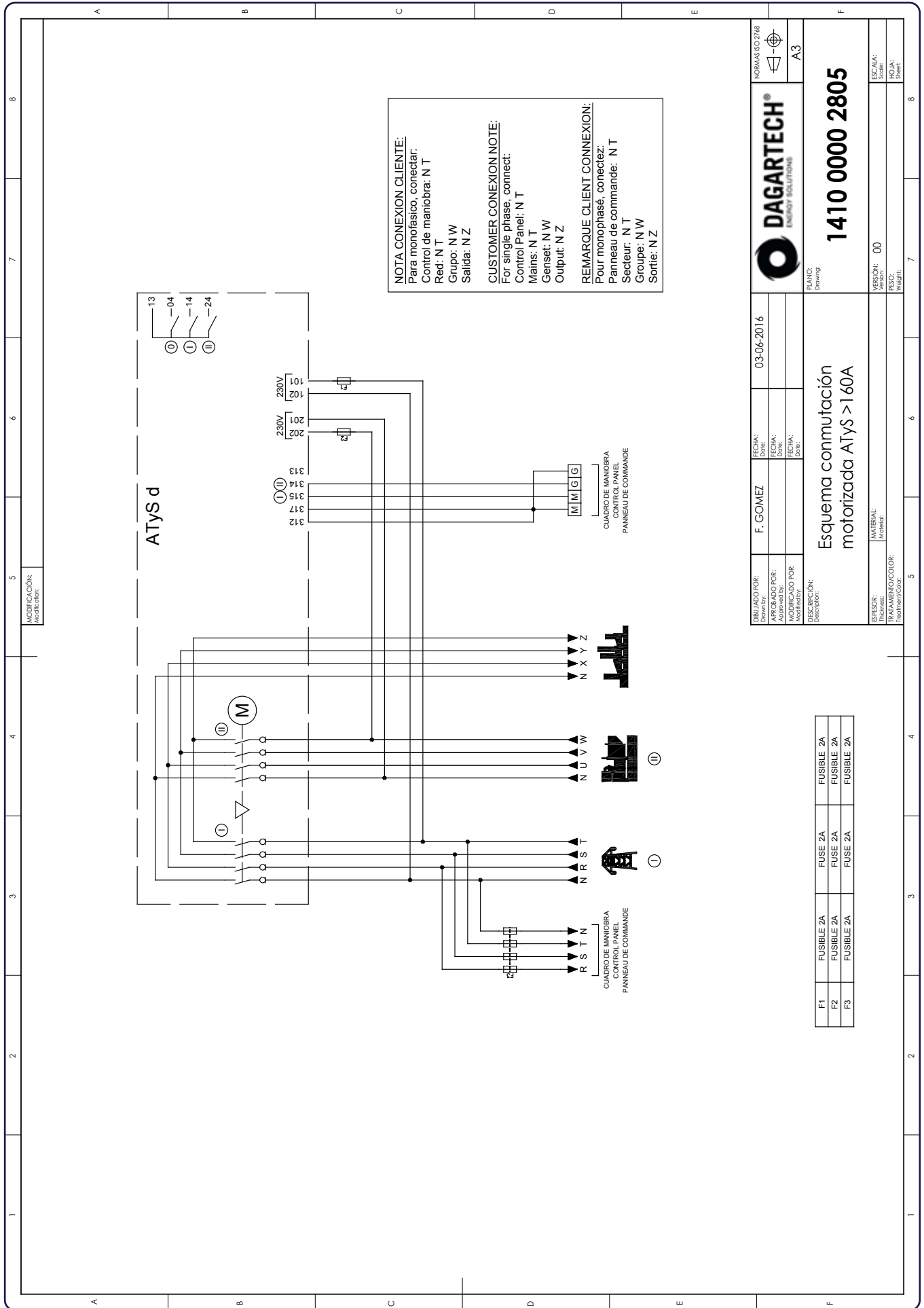
## 2. Electrical specifications

Amperage		1000A
Frequencies		50Hz / 60Hz
Thermal intensity (Ith) at 40°C (A)		1000
Thermal intensity (Ith) at 50°C (A)		N/A
Thermal intensity (Ith) at 60°C (A)		N/A
Thermal intensity (Ith) at 70°C (A)		N/A
Rated insulation voltage Ui (V) (Power circuit)		1000
Rated impulse voltage Uimp (V) (Power circuit)		12
Rated insulation voltage Ui (V) (Control circuit)		300
Rated impulse voltage Uimp (V) (Control circuit)		4
Rated operating current, Ie (A) IEC 60947-3 at 415VAC - 40°C	AC 21A / 21B <sup>1</sup>	1000/1000
	AC 22A / 22B <sup>1</sup>	1000/1000
	AC 23A / 23B <sup>1</sup>	1000/1000
Rated operating current, Ie (A) IEC 60947-6-1 at 415VAC - 40°C	AC 33A / 32B	N/A
Short-circuit fuse protection (use of DIN gG fuses)	Expected short-circuit current (kA eff)	100
	Associated fuse rating (DIN gG)	1000
Short-circuit capability	Rated short-time withstand current 1s ICW (kA)	N/A
	Rated short-time withstand current 30 ms ICW (kA)	N/A
	Rated short-time withstand current 60 ms ICW (kA)	20
	Rated short-time withstand current 1ms ICW (kA)	35
Reaction time (excluding loss of supply detection time and excluding any applicable delay timer)	I-II or II-I/I-O OR O-O-II (s)	2,6/1,6
	Duration of the "blackout" in Un(s)	1,5
Consumption	Network current (A)	N/A
	Steady state consumption (VA)	N/A
Mechanical characteristics	Number of manoeuvres	4000
Conductor cross-section (not compatible with aluminium cables)	Minimum cross-section (Cu mm <sup>2</sup> ), rigid and flexible	N/A
	Maximum cross-section (Cu mm <sup>2</sup> ), rigid and flexible	N/A
Minimum / maximum power supply (VAC)		166/332
Nominal power consumption electric control (start/nominal) (VA)		482/206

<sup>1</sup>Category of use with **indication A**: Frequent manoeuvres / Category of use with **indication B**: non-frequent manoeuvres.



Indicative technical plan and indicative images. Dagartech reserves the right to modify the data in this technical sheet without prior notice.



**NOTA CONEXION CLIENTE:**  
 Para monofásico, conectar:  
 Control de maniobra: N T  
 Red: N T  
 Grupo: N W  
 Salida: N Z

**CUSTOMER CONEXION NOTE:**  
 For single phase, connect:  
 Control Panel: N T  
 Mains: N T  
 Genset: N W  
 Output: N Z

**REMARQUE CLIENT CONNEXION:**  
 Pour monophasé, connectez:  
 Panneau de commande: N T  
 Secteur: N T  
 Groupe: N W  
 Sortie: N Z

	NORMAS ISO 9001 A3
1410 0000 2805	PLAN: Drawing
Esquema conmutación motorizada ATys > 160A	VERSION: 00 ESCALA: Sheet PESO: Weight
F. GOMEZ 03-06-2016	FECHA: Date FECHA: Date FECHA: Date
DESCRIPCION: Description	MATERIAL: Material TRATAMIENTO/COLOR: Treatment/Color

F1	FUSIBLE 2A	FUSE 2A	FUSIBLE 2A
F2	FUSIBLE 2A	FUSE 2A	FUSIBLE 2A
F3	FUSIBLE 2A	FUSE 2A	FUSIBLE 2A



**DAGARTECH<sup>®</sup>**

CUSTOM ENERGY SOLUTIONS

---

[info@dagartech.com](mailto:info@dagartech.com)

T +34 976 141 655

---

**CUSTOM  
ENERGY  
SOLUTIONS**

[dagartech.com](http://dagartech.com)