

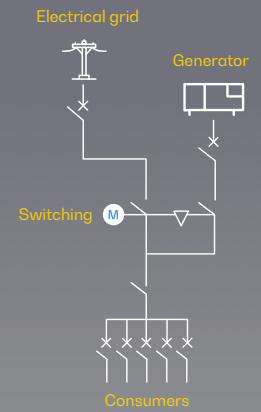
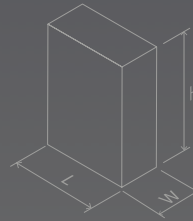


# ATyS d 200A

Remotely operated motorised switch (RTS)

 **WEIGHT:**  
**40 kg**


 **DIMENSIONS:**  
**L: 648 mm**  
**W: 337 mm**  
**H: 511 mm**




CE certified


Image for orientation purposes. Dagartech reserves the right to modify the data in this technical sheet without prior notice.



 **Supply voltage**  
 208-277VAC±20%

 **Plug&play**  
 Solution

 **Emergency manual**  
 start

 **Watchdog**  
 relay

 **IEC 60947-6-1 AC**  
 33B (up to 1250A)

## 1. General technical data

General technical data	Rated voltage	230VAC	
	Voltage supply range	177-288VAC	
	Frequency	50Hz / 60Hz	
	Number of poles	4	
	IP protection degree	43	
	Cutting and isolating devices	Mechanically interlocked	
	Cutting sectioning	Total Apparent	
	Operating mode	Automatic / manual operation mode with interlocking	
	Blocking	Lock - padlock	
	Cable connection	Low/low	
	Fastening system	Wall fixation, legs supplied	
Frame colour	RAL 7035		

- ATyS d devices are **4-pole remotely operated motorised transfer switches** with fully apparent cutoff.
- They allow the **on-load transfer of two three-phase power supplies via de-energised remote contacts**, from an external automatic controller, using pulse logic or a switch.
- They are **designed for use in low voltage systems** where an interruption of power to the load during transfer is acceptable.

Environmental conditions	Humidity (non-condensing)	55 °C	80%	
		40 °C	95%	
	Temperature	No de-rating	-20°C +40°C	
		With de-rating	-20°C < t ≤ +70°C	
	Altitude	No de-rating	Max 2000m	
			2000 m<A≤3000	3000m<A≤4000
	Correction factors	EU	0,95	0,8
IE		0,85	0,85	

### Directives and Regulations

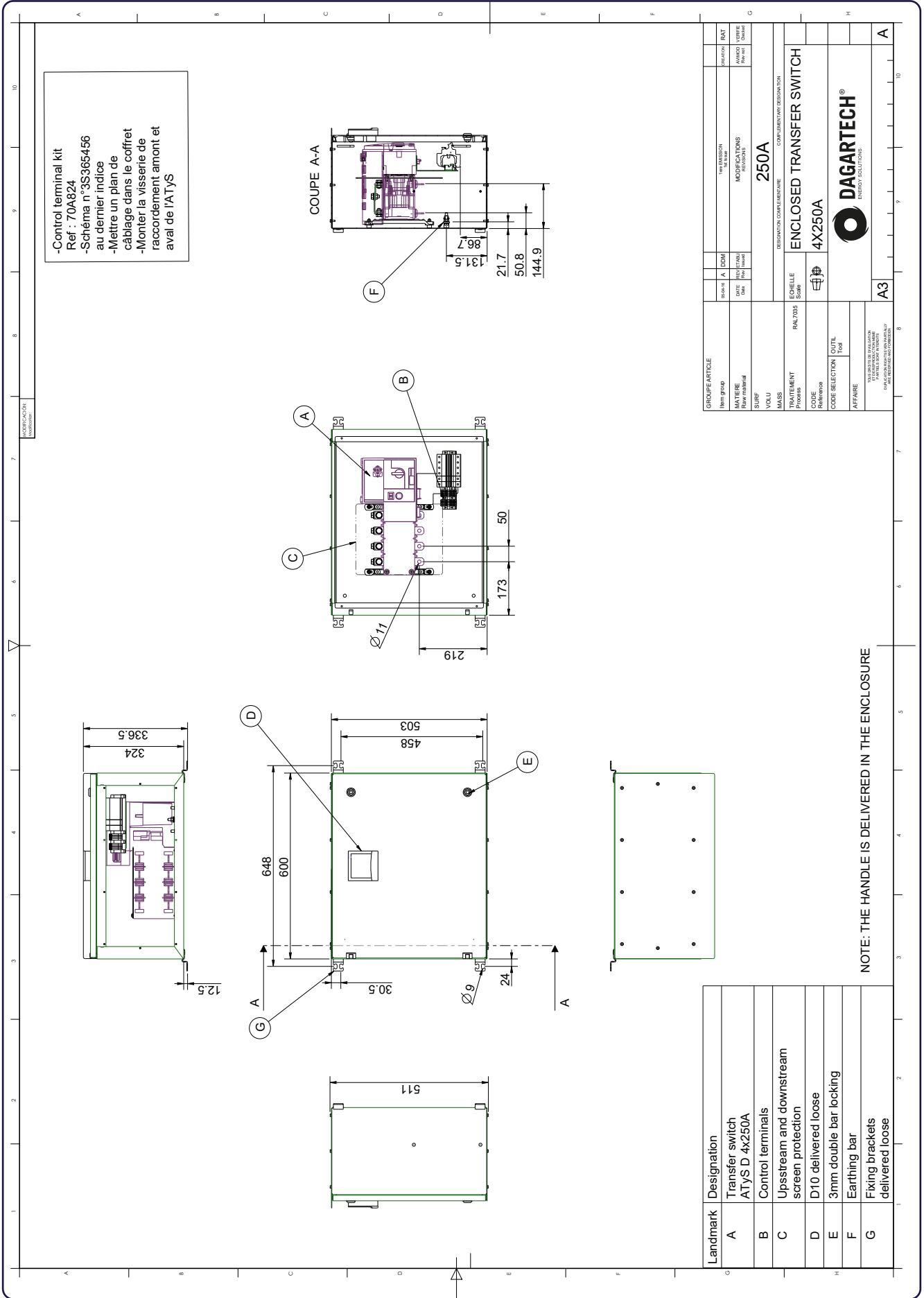
At a minimum, the ATyS d M models comply with the following international standards

- IEC 60947-6-1
- GB 14048-11
- EN 60947-6-1
- VDE 0660-107
- BS EN 60947-6-1
- NBN EN 60947-6-1
- IEC 60947-3
- IS 13947-3
- EN 60947-3
- NBN EN 60947-3
- BS EN 60947-3

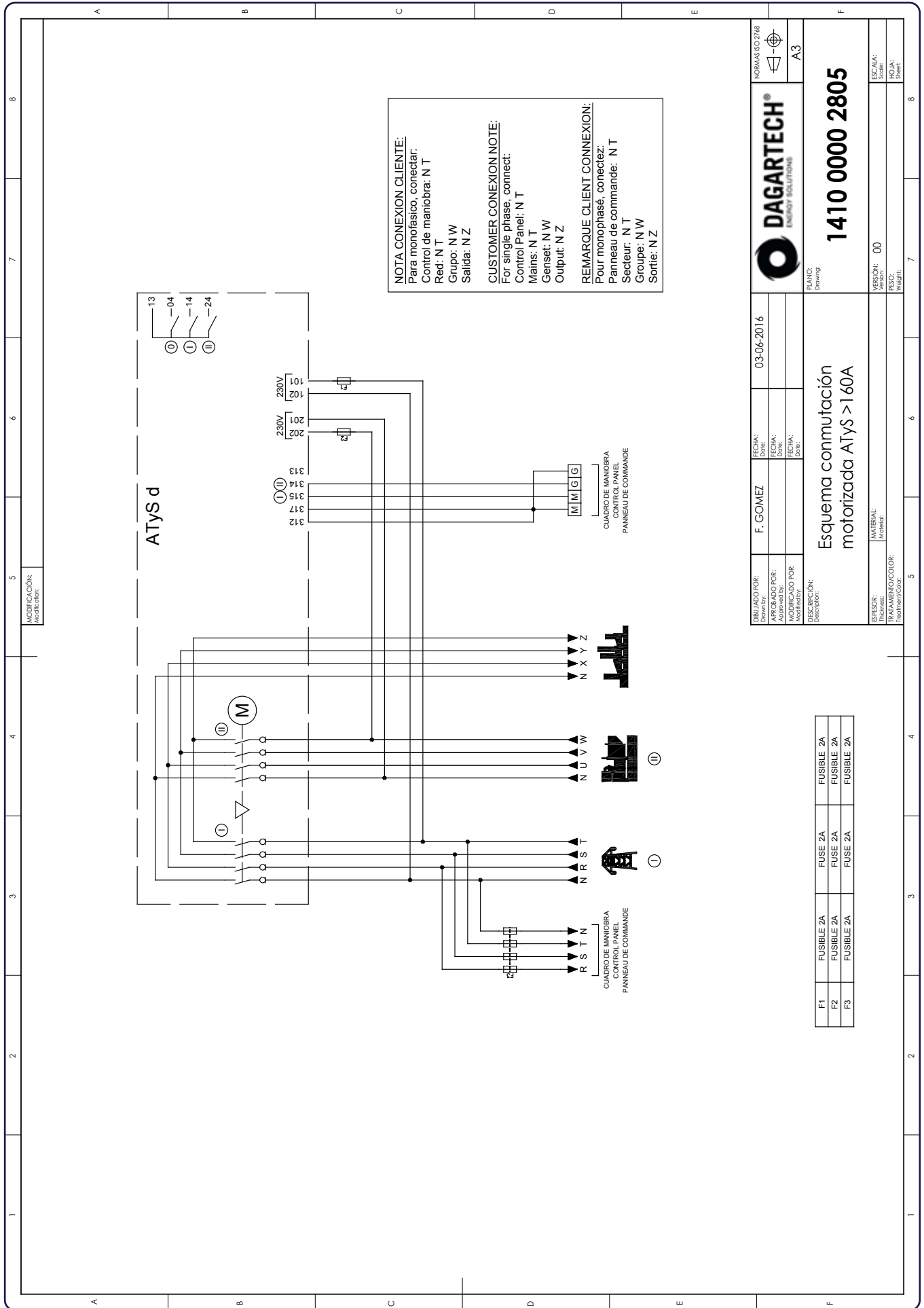
## 2. Electrical specifications

Amperage		200A
Frequencies		50Hz / 60Hz
Thermal intensity (Ith) at 40°C (A)		200
Thermal intensity (Ith) at 50°C (A)		N/A
Thermal intensity (Ith) at 60°C (A)		N/A
Thermal intensity (Ith) at 70°C (A)		N/A
Rated insulation voltage Ui (V) (Power circuit)		800
Rated impulse voltage Uimp (V) (Power circuit)		12
Rated insulation voltage Ui (V) (Control circuit)		300
Rated impulse voltage Uimp (V) (Control circuit)		4
Rated operating current, Ie (A) IEC 60947-3 at 415VAC - 40°C	AC 21A / 21B <sup>1</sup>	200/200
	AC 22A / 22B <sup>1</sup>	200/200
	AC 23A / 23B <sup>1</sup>	200/200
Rated operating current, Ie (A) IEC 60947-6-1 at 415VAC - 40°C	AC 33A / 32B	N/A
Short-circuit fuse protection (use of DIN gG fuses)	Expected short-circuit current (kA eff)	50
	Associated fuse rating (DIN gG)	200
Short-circuit capability	Rated short-time withstand current 1s ICW (kA)	N/A
	Rated short-time withstand current 30 ms ICW (kA)	N/A
	Rated short-time withstand current 60 ms ICW (kA)	N/A
	Rated short-time withstand current 1ms ICW (kA)	7
Reaction time (excluding loss of supply detection time and excluding any applicable delay timer)	I-II or II-I/I-O OR O O-II (s)	0,75/0,45
	Duration of the "blackout" in Un(s)	0,3
Consumption	Network current (A)	N/A
	Steady state consumption (VA)	N/A
Mechanical characteristics	Number of manoeuvres	10000
Conductor cross-section (not compatible with aluminium cables)	Minimum cross-section (Cu mm <sup>2</sup> ), rigid and flexible	N/A
	Maximum cross-section (Cu mm <sup>2</sup> ), rigid and flexible	N/A
Minimum / maximum power supply (VAC)		166/332
Nominal power consumption electric control (start/nominal) (VA)		206/114

<sup>1</sup>Category of use with **indication A**: Frequent manoeuvres / Category of use with **indication B**: non-frequent manoeuvres.



Indicative technical plan and indicative images. Dagartech reserves the right to modify the data in this technical sheet without prior notice.



**NOTA CONEXION CLIENTE:**  
 Para monofásico, conectar:  
 Control de maniobra: N T  
 Red: N T  
 Grupo: N W  
 Salida: N Z

**CUSTOMER CONEXION NOTE:**  
 For single phase, connect:  
 Control Panel: N T  
 Mains: N T  
 Genset: N W  
 Output: N Z

**REMARQUE CLIENT CONNEXION:**  
 Pour monophasé, connectez:  
 Panneau de commande: N T  
 Secteur: N T  
 Groupe: N W  
 Sortie: N Z

	NORMAS ISO 9001 
DIBUJADO POR: APROBADO POR: MODIFICADO POR: DESCRIPCIÓN: Identificación:	FECHA: FECHA: FECHA: Descripción:
F. GOMEZ	03-06-2016
<b>Esquema conmutación motorizada ATyS &gt; 160A</b>	
MATERIAL: Material:	00
TRATAMIENTO/COLOR: Treatment/Color:	00
VERSION: Esc.:	00
PESO: Weight:	00

F1	FUSIBLE 2A	FUSE 2A	FUSIBLE 2A
F2	FUSIBLE 2A	FUSE 2A	FUSIBLE 2A
F3	FUSIBLE 2A	FUSE 2A	FUSIBLE 2A



**DAGARTECH<sup>®</sup>**

CUSTOM ENERGY SOLUTIONS

---

[info@dagartech.com](mailto:info@dagartech.com)

T +34 976 141 655

---

**CUSTOM  
ENERGY  
SOLUTIONS**

[dagartech.com](http://dagartech.com)