



ATyS d M 125A

Remotely operated motorised switch (RTS)

 WEIGHT:
15 kg

 DIMENSIONS:
L: 400 mm
W: 200 mm
H: 600 mm

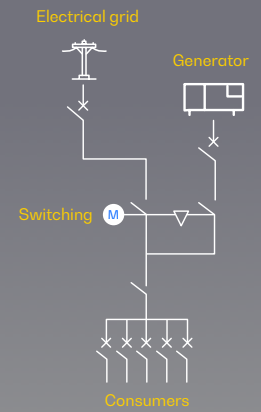
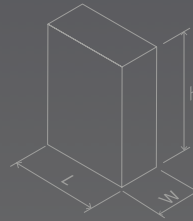





 CE certified

Image for orientation purposes. Dagartech reserves the right to modify the data in this technical sheet without prior notice.


 Supply voltage
 208-277VAC±20%

 Plug&play
 Solution

 Emergency manual
 start

 Watchdog
 relay

 IEC 60947-6-1 AC
 33B (up to 1250A)

1. General technical data

General technical data	Rated voltage	230VAC
	Voltage supply range	177-288VAC
	Frequency	50Hz / 60Hz
	Number of poles	4
	IP protection degree	54
	Cutting and isolating devices	Mechanically interlocked
	Cutting sectioning	Total Apparent
	Operating mode	Automatic / manual operation mode with interlocking
	Blocking	Lock - padlock
	Cable connection	Low/low
	Fastening system	Wall fixation, legs supplied
Frame colour	RAL 7035	

- ATyS d M devices are **4-pole transfer switches that are remotely controlled by de-energised contacts** from an external by means of volt-free contacts from an external controller.
- These are **modular products with fully apparent cutoff indication** and are designed to be used in load feed systems during transfer.

Environmental conditions	Humidity (non-condensing)	55 °C	80%	
		40 °C	95%	
	Temperature	No de-rating	-20°C +40°C	
		With de-rating	40°C < t ≤ +70°C	
	Altitude	No de-rating	Max 2000m	
			2000 m<A≤3000	3000m<A≤4000
	Correction factors	EU	0,95	0,8
IE		0,85	0,85	

Directives and Regulations

At a minimum, the ATyS d M models comply with the following international standards

- IEC 60947-6-1
- GB 14048-11
- EN 60947-6-1
- VDE 0660-107
- BS EN 60947-6-1
- NBN EN 60947-6-1
- IEC 60947-3
- IS 13947-3
- EN 60947-3
- NBN EN 60947-3
- BS EN 60947-3

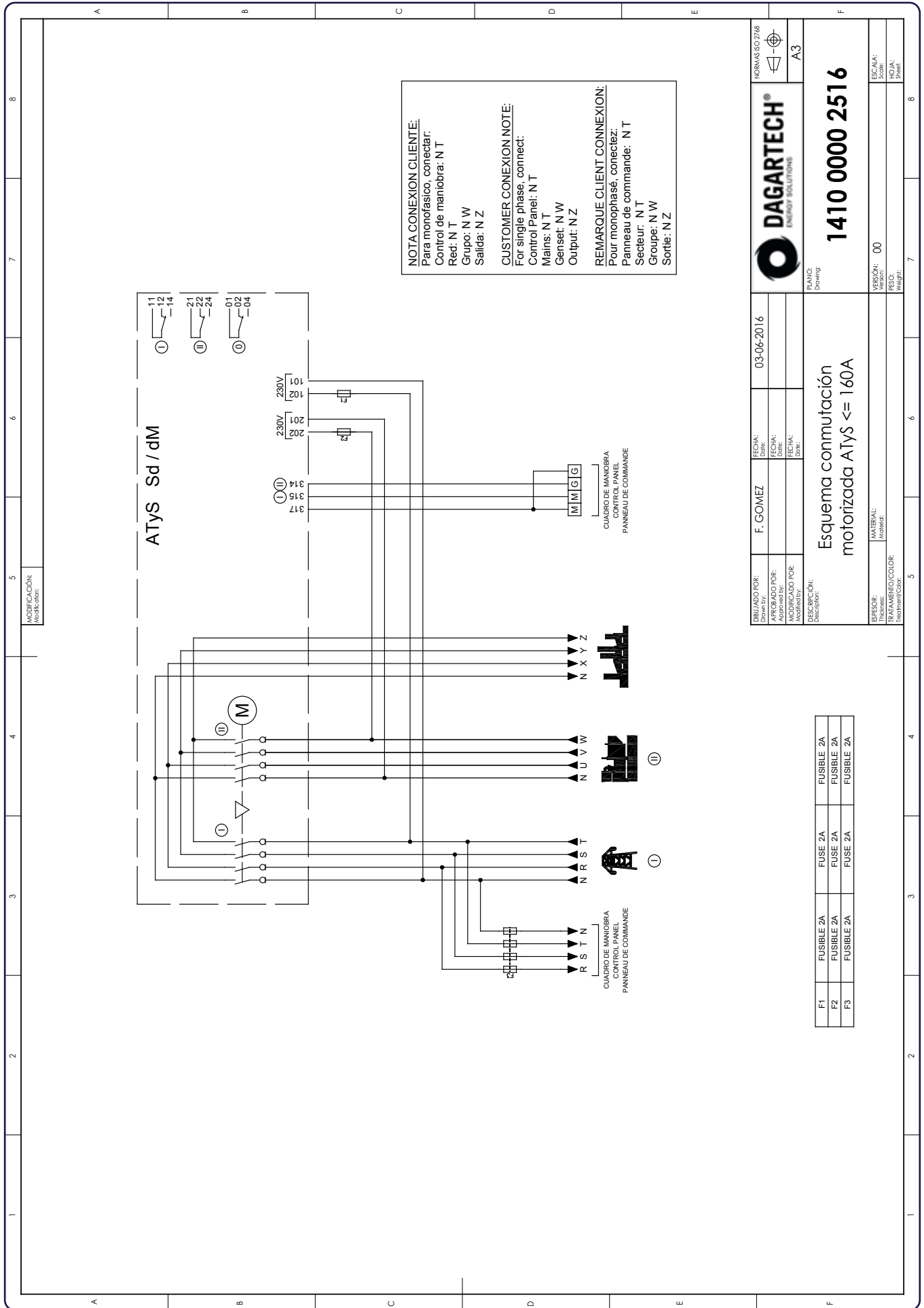
2. Electrical specifications

Amperage		125A
Frequencies		50Hz / 60Hz
Thermal intensity (Ith) at 40°C (A)		125
Thermal intensity (Ith) at 50°C (A)		110*
Thermal intensity (Ith) at 60°C (A)		100*
Thermal intensity (Ith) at 70°C (A)		80*
Rated insulation voltage Ui (V) (Power circuit)		800
Rated impulse voltage Uimp (V) (Power circuit)		8
Rated insulation voltage Ui (V) (Control circuit)		300
Rated impulse voltage Uimp (V) (Control circuit)		4
Rated operating current, Ie (A) IEC 60947-3 at 415VAC - 40°C	AC 21A / 21B ¹	125/125
	AC 22A / 22B ¹	125/125
	AC 23A / 23B ¹	125/125
Rated operating current, Ie (A) IEC 60947-6-1 at 415VAC - 40°C	AC 33A / 32B	125/160
Short-circuit fuse protection (use of DIN gG fuses)	Expected short-circuit current (kA eff)	50
	Associated fuse rating (DIN gG)	125
Short-circuit capability	Rated short-time withstand current 1s ICW (kA)	4
	Rated short-time withstand current 30 ms ICW (kA)	10
	Rated short-time withstand current 60 ms ICW (kA)	N/A
	Rated short-time withstand current 1ms ICW (kA)	7
Reaction time (excluding loss of supply detection time and excluding any applicable delay timer)	I-II or II-I/I-O OR O O-II (s)	0,75/0,45
	Duration of the "blackout" in Un(s)	0,3
Consumption	Network current (A)	20
	Steady state consumption (VA)	6
Mechanical characteristics	Number of manoeuvres	10000
Conductor cross-section (not compatible with aluminium cables)	Minimum cross-section (Cu mm ²), rigid and flexible	10
	Maximum cross-section (Cu mm ²), rigid and flexible	70
Minimum / maximum power supply (VAC)		166/332
Nominal power consumption electric control (start/nominal) (VA)		206/114

¹Category of use with **indication A**: Frequent manoeuvres / Category of use with **indication B**: non-frequent manoeuvres.



Indicative technical plan and indicative images. Dagartech reserves the right to modify the data in this technical sheet without prior notice.



DAGARTECH® ENERGY SOLUTIONS		NORMAS ISO 7768	
1410 0000 2516		A3	
Esquema conmutación motorizada ATyS <= 160A		PLANO: Grouping	
DESARROLLADO POR: F. GOMEZ	FECHA: 03-06-2016	VERSION: 00	ES/A/A: Sheet:
APROBADO POR:	FECHA:	FECSO:	ES/A/A: Sheet:
MODIFICADO POR:	FECHA:	FECSO:	ES/A/A: Sheet:
DESCRIPCION: Panel		MATERIAL: Aluminum	
TRATAMIENTO/COLOR:		WEIGHT: Sheet:	

F1	FUSIBLE 2A	FUSIBLE 2A
F2	FUSIBLE 2A	FUSIBLE 2A
F3	FUSIBLE 2A	FUSIBLE 2A



DAGARTECH[®]

CUSTOM ENERGY SOLUTIONS

info@dagartech.com

T +34 976 141 655

**CUSTOM
ENERGY
SOLUTIONS**

dagartech.com